

The Blue Moon Rogaine

MAINPEAK State Championships 28 and 29 August 2004

Western Australian Rogaining Association, PO Box 1201, Subiaco, WA, 6904

This event is proudly sponsored and supported by:



Setters and Veters

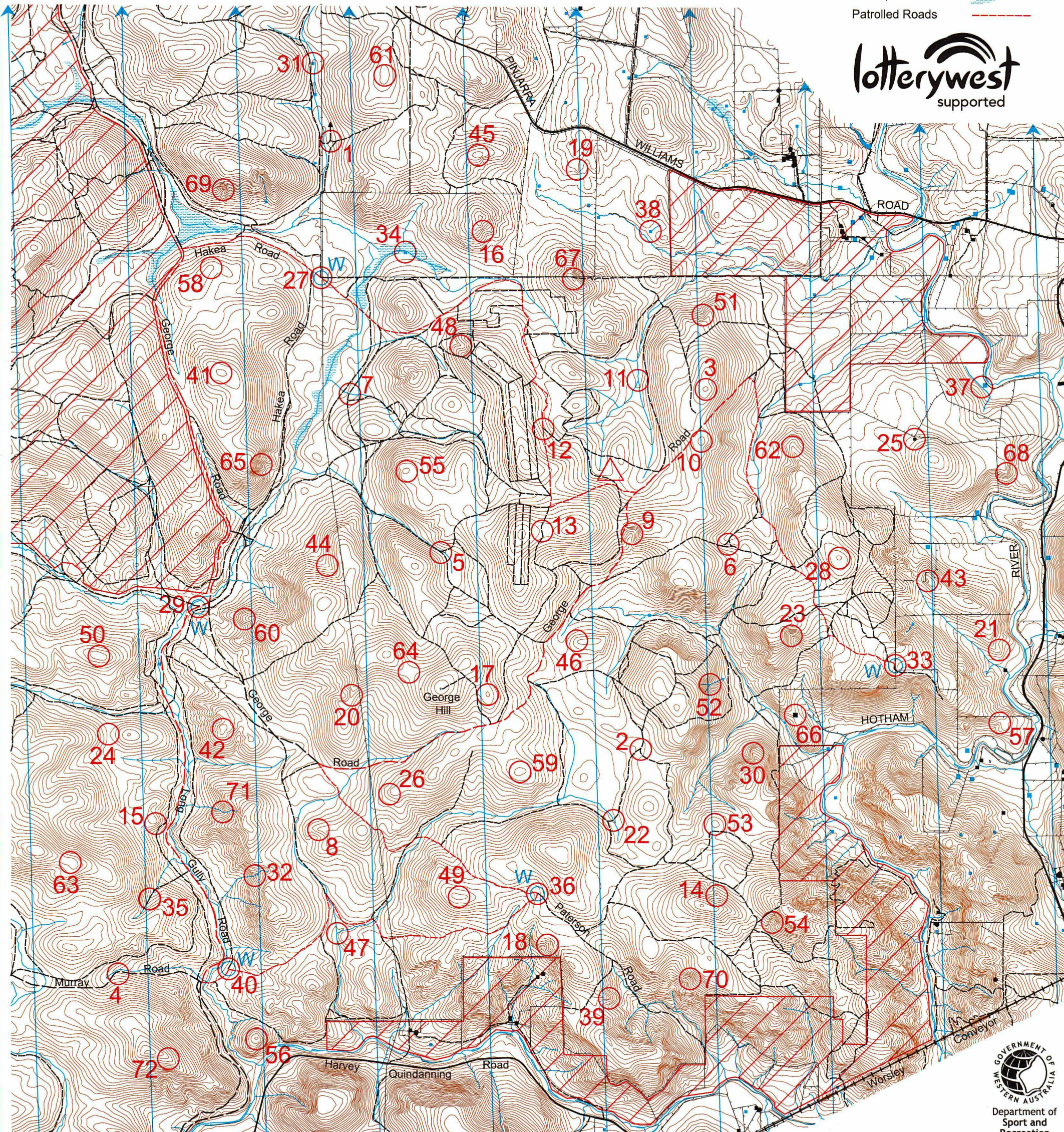
Brian Wade
Joe Scibiorski
Ron Lockley
Geoff Monk

Thanks and appreciation to:

Mr T & Mrs C Nicholls
Mr T & Mrs G Salmeri
Karafil Family
Alcoa World Alumina Australia
Ms K Pearce of CALM
Quindanning Fire Brigade

LEGEND

- Buildings/Fixed Objects
- Continuations
- Control
- Contours
- Dams
- Fences
- 132kV Power Line
- Hash House
- Magnetic North Line
- Out of Bounds
- Road, Sealed
- Road, Major Gravel
- Track
- Watercourse
- Water Drop
- Water Tanks
- Swamp
- Patrolled Roads



This map was produced using OCAD 8 by the Western Australian Rogaining Association, wa.rogaing.asn.au.
Data supplied by DOLA and used under copy licence 393/93. Possession of this map does not give right of entry to this area.

SCALE 1:50,000, 5 metre contour interval
0 1km 2km 3km



THE BLUE MOON ROGAINE

WARA 'Mainpeak' State Championships 28 and 29 August 2004

No.	Description	Points	No.	Description	Points	Important Information
1	The western track intersection	20	37	The dam pump	50	
2	The track intersection, 30m @ 300 degrees	20	38	The dam, 60m @ 230 degrees	50	Control Cards
3	The summit, broad	20	39	The spur	50	From 1130 Saturday
4	The road bend, 50m @ 340 degrees	20	40	The track junction	50	
5	The gully, on a track intersection	20	41	The summit	50	Briefing
6	The track intersection, middle of	20	42	The knoll, broad	50	1145 Saturday
7	The eastern track, watercourse intersection	30	43	The knoll, rocky	60	Start
8	The spur	30	44	The gully	60	1200 Saturday
9	The gully	30	45	The knoll	60	Finish
10	The knoll, broad	30	46	The spur	60	1200 Sunday
11	The watercourse junction	30	47	The watercourse junction	60	
12	The track intersection	30	48	The gully, broad	60	Hash House
						Opens 1600 Saturday
13	The saddle, track intersection	30	49	The knoll, broad	70	Closes 1330 Sunday
14	The knoll	30	50	The summit, broad	70	
15	The knoll, broad, south-east edge	30	51	The gully	70	Sunset
16	The gully	30	52	The watercourse intersection	70	1754 Saturday
17	The knoll, broad	30	53	The knoll, broad	70	Sunrise
18	The gully	30	54	The gully	70	0635 Sunday
19	The spur	40	55	The summit	80	Moonrise
20	The spur, narrow	40	56	The knoll	80	1548 Saturday
21	The spur	40	57	The gully, head of	80	Moonset
22	The track, watercourse intersection	40	58	The knoll, north-east end	80	0612 Sunday
23	The gully	40	59	The knoll, broad	80	
24	The saddle	40	60	The spur	80	
						Controls Used
25	The concrete water tank	40	61	The summit	90	72
26	The spur, broad	40	62	The spur	90	
27	The fence corner	40	63	The spur, broad	90	Total Points
28	The knoll, broad	40	64	The saddle, broad	90	3960
29	The track, road junction	40	65	The gully	90	
30	The spur, rocky	40	66	The saddle, Ye Olde Bus, Route 66	90	
						Water Drops
31	The disused dam, west side	50	67	The summit	100	Control #27
32	The watercourse	50	68	The spur	100	Control #29
33	The track, bend, adjacent to the fence	50	69	The gully	100	Control #33
34	The dam, south-east side	50	70	The gully, head of	100	Control #36
35	The gully, on a track	50	71	The watercourse, head of	100	Control #40
36	The track intersection	50	72	The spur	100	
	Patrolled Roads (Marked in red on map)			Patrolled Roads (Marked in red on map)		
	1) From hash, west and north to #12 and north then west to #27			4) From #40, east, past #47, to #36		
	2) From #27, Hakea Road west to George Road, then south to #29			5) From #36, north-west on Paterson Road to George Road and back to hash		
	3) From #29, south down Long Gully Road to # 40			6) From hash, north-east on George Road then south to #33		